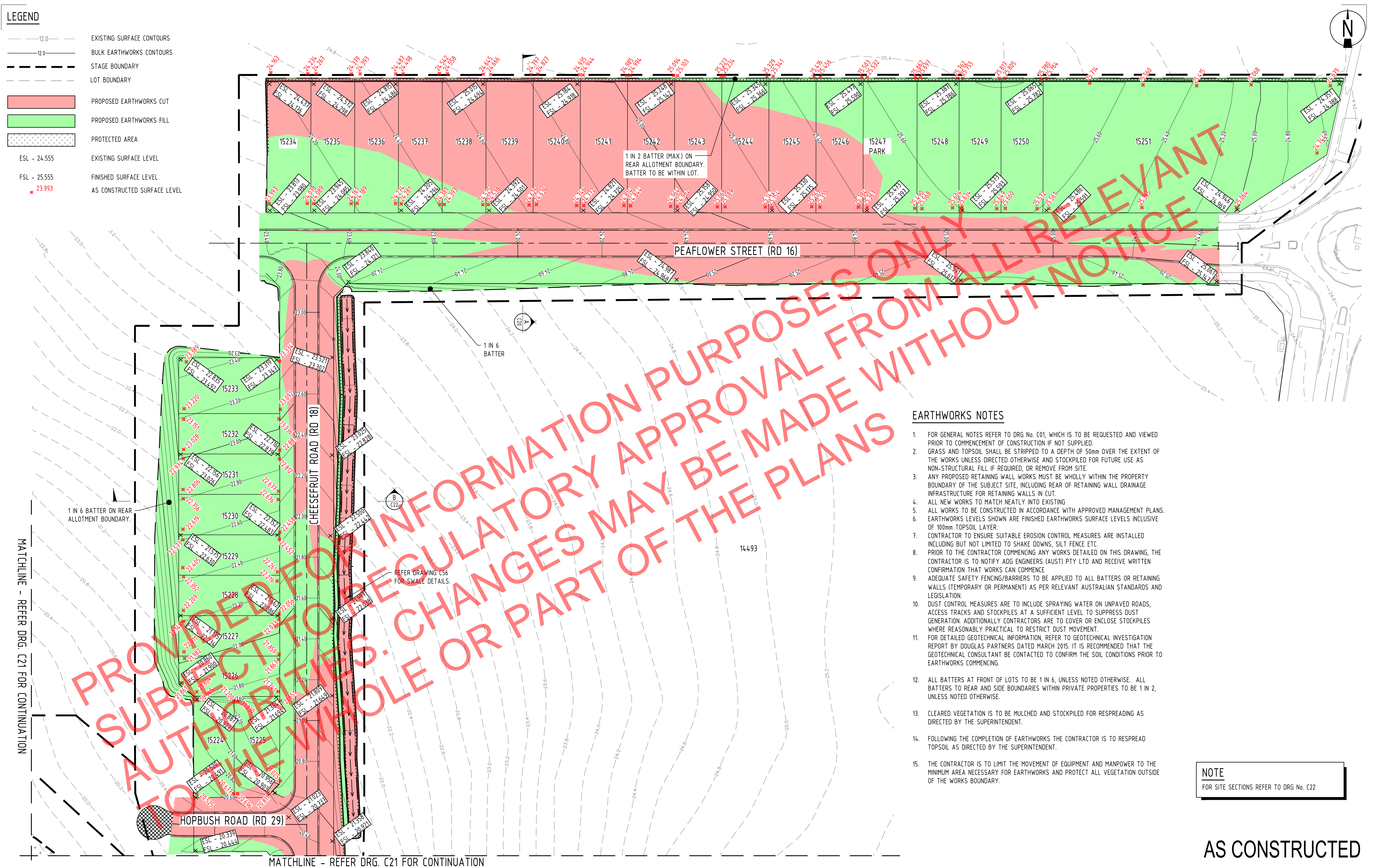


LEGEND

	EXISTING SURFACE CONTOURS
	BULK EARTHWORKS CONTOURS
	STAGE BOUNDARY
	LOT BOUNDARY
	PROPOSED EARTHWORKS CUT
	PROPOSED EARTHWORKS FILL
	PROTECTED AREA
ESL - 24.555	EXISTING SURFACE LEVEL
FSL - 25.555	FINISHED SURFACE LEVEL
★ 23.993	AS CONSTRUCTED SURFACE LEVEL



EARTHWORKS NOTES

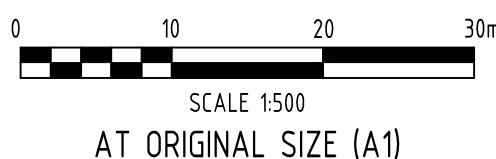
- FOR GENERAL NOTES REFER TO DRG No. C01, WHICH IS TO BE REQUESTED AND VIEWED PRIOR TO COMMENCEMENT OF CONSTRUCTION IF NOT SUPPLIED.
- GRASS AND TOPSOIL SHALL BE STRIPPED TO A DEPTH OF 50mm OVER THE EXTENT OF THE WORKS UNLESS DIRECTED OTHERWISE AND STOCKPILED FOR FUTURE USE AS NON-STRUCTURAL FILL IF REQUIRED, OR REMOVE FROM SITE.
- ANY PROPOSED RETAINING WALL WORKS MUST BE WHOLLY WITHIN THE PROPERTY BOUNDARY OF THE SUBJECT SITE, INCLUDING REAR OF RETAINING WALL DRAINAGE INFRASTRUCTURE FOR RETAINING WALLS IN CUT.
- ALL NEW WORKS TO MATCH NEATLY INTO EXISTING.
- ALL WORKS TO BE CONSTRUCTED IN ACCORDANCE WITH APPROVED MANAGEMENT PLANS.
- EARTHWORKS LEVELS SHOWN ARE FINISHED EARTHWORKS SURFACE LEVELS INCLUSIVE OF 100mm TOPSOIL LAYER.
- CONTRACTOR TO ENSURE SUITABLE EROSION CONTROL MEASURES ARE INSTALLED INCLUDING BUT NOT LIMITED TO SHAKE DOWNS, SILT FENCE ETC.
- PRIOR TO THE CONTRACTOR COMMENCING ANY WORKS DETAILED ON THIS DRAWING, THE CONTRACTOR IS TO NOTIFY ADG ENGINEERS (AUST) PTY LTD AND RECEIVE WRITTEN CONFIRMATION THAT WORKS CAN COMMENCE.
- ADEQUATE SAFETY FENCING/BARRIERS TO BE APPLIED TO ALL BATTERS OR RETAINING WALLS (TEMPORARY OR PERMANENT) AS PER RELEVANT AUSTRALIAN STANDARDS AND LEGISLATION.
- DUST CONTROL MEASURES ARE TO INCLUDE SPRAYING WATER ON UNPAVED ROADS, ACCESS TRACKS AND STOCKPILES AT A SUFFICIENT LEVEL TO SUPPRESS DUST GENERATION. ADDITIONALLY CONTRACTORS ARE TO COVER OR ENCLOSE STOCKPILES WHERE REASONABLY PRACTICAL TO RESTRICT DUST MOVEMENT.
- FOR DETAILED GEOTECHNICAL INFORMATION, REFER TO GEOTECHNICAL INVESTIGATION REPORT BY DOUGLAS PARTNERS DATED MARCH 2015. IT IS RECOMMENDED THAT THE GEOTECHNICAL CONSULTANT BE CONTACTED TO CONFIRM THE SOIL CONDITIONS PRIOR TO EARTHWORKS COMMENCING.
- ALL BATTERS AT FRONT OF LOTS TO BE 1 IN 6, UNLESS NOTED OTHERWISE. ALL BATTERS TO REAR AND SIDE BOUNDARIES WITHIN PRIVATE PROPERTIES TO BE 1 IN 2, UNLESS NOTED OTHERWISE.
- CLEARED VEGETATION IS TO BE MULCHED AND STOCKPILED FOR RESPREADING AS DIRECTED BY THE SUPERINTENDENT.
- FOLLOWING THE COMPLETION OF EARTHWORKS THE CONTRACTOR IS TO RESPREAD TOPSOIL AS DIRECTED BY THE SUPERINTENDENT.
- THE CONTRACTOR IS TO LIMIT THE MOVEMENT OF EQUIPMENT AND MANPOWER TO THE MINIMUM AREA NECESSARY FOR EARTHWORKS AND PROTECT ALL VEGETATION OUTSIDE OF THE WORKS BOUNDARY.

NOTE

FOR SITE SECTIONS REFER TO DRG No. C22

AS CONSTRUCTED

Rev	Date	Description	By	Chk
2	29.01.19	AS CONSTRUCTED	JMB	SW
1	17.07.18	ISSUED FOR CONSTRUCTION	JB	SW
0	08.06.18	CONTRACT DRAWING	JB	SW

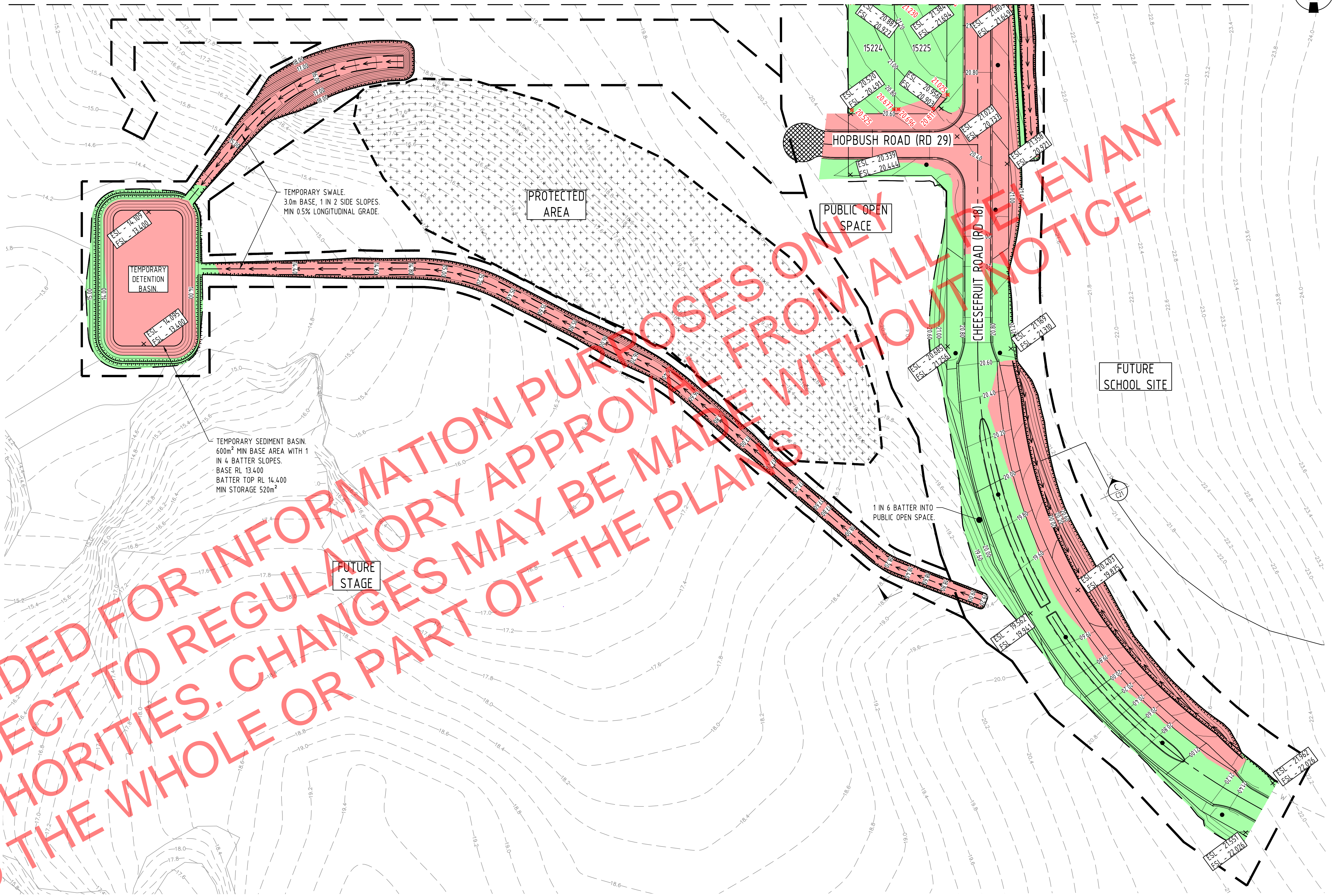


Client COSTOJIC PTY LTD	Discipline CIVIL	Status AS CON	Title EARTHWORKS LAYOUT SHEET 1 OF 2
Project Name ZUCCOLI ASPIRE STAGE 3E CIVIL WORKS	Designed By TM	Checked By SW	Approved By CJM
	Project No. 20696_3E	Drawn By JB	Scale at A1 1:500
The concepts and information contained in this document are the copyright of ADG Engineers (Aust) Pty Ltd. Use or copying of the document in whole or in part without the written permission of ADG Engineers (Aust) Pty Ltd constitutes an infringement of copyright. Do not scale drawings. If in doubt, ask!			Drawing No. C20
			Revision 2

NOTES
1. FOR BULK EARTHWORKS LEGEND, NOTES & DETAILS
REFER TO DRG No. C20

NOTES
1. LOCATION OF TEMPORARY SWALE SHOWN
INDICATIVE. TO BE CONFIRMED WITH CONTRACTOR ON
SITE.

MATCHLINE - REFER DRG. C20 FOR CONTINUATION



AS CONSTRUCTED

Rev	Date	Description	By	Chk
2	29.01.19	AS CONSTRUCTED	JMB	SW
1	17.07.18	ISSUED FOR CONSTRUCTION	JB	SW
0	08.06.18	CONTRACT DRAWING	JB	SW



Client COSTOJIC PTY LTD		Discipline CIVIL		Status AS CON		Title EARTHWORKS LAYOUT SHEET 2 OF 2
Project Name ZUCCOLI ASPIRE STAGE 3E CIVIL WORKS		Designed By TM	Checked By SW	Approved By CJM		
		Project No. 20696_3E	Drawn By JB	Scale at A1 1:500		
The concepts and information contained in this document are the copyright of ADG Engineers (Aust) Pty Ltd. Use or copying of the document in whole or in part without the written permission of ADG Engineers (Aust) Pty Ltd constitutes an infringement of copyright. Do not scale drawings. If in doubt, ask!						
Drawing No. C21						Revision 2